

# NOTICE OF RACE

---

## 470 CLASS WORLD CHAMPIONSHIP 2-9 AUGUST 2019

The Japanese 470 National Class Association and Kanagawa Prefecture Sailing Federation in co-operation with the International 470 Class Association and under the auspices of the Japanese Sailing Federation (JSAF) and support of Japan Sport Council are pleased to invite 470 sailors to take part in the:

**2019 Men's 470 World Championship (for men crews)**  
and the  
**2019 Women's 470 World Championship (for women crews)**

in Enoshima, Japan from 2-9 August 2019

### 1. RULES

---

- 1.1 The Championship will be governed by the rules as defined in *Racing Rules of Sailing* (RRS).
- 1.2 National Authority prescriptions will not apply.
- 1.3 For the Medal Races, World Sailing Addendum Q, Umpired Fleet Racing, currently available on the World Sailing website shall apply. The version that is current when the regatta begins will be listed in the Sailing Instructions.
- 1.4 No Class Rule variations will apply.
- 1.5 In all rules governing this Championship:
  - 1.5.1 [NP] denotes a rule that shall not be grounds for protests by a boat. This changes RRS 60.1(a).

- 1.5.2 [SP] denotes a rule which a standard penalty may be applied by the Race Committee without a hearing, or a discretionary penalty applied by the International Jury with a hearing. This changes RRS 63.1 and A5.
- 1.6 If there is a conflict between languages the English text will take precedence.

## **2. [DP] [SP] [NP] ADVERTISING AND BOW NUMBERS**

---

- 2.1 [DP] Boats may be required to display bow numbers and / or advertising chosen and supplied by the Organizing Authority. If this rule is broken, World Sailing Regulation 20.9.2 applies.
- 2.2 From the second racing day, competitors ranking first, second and third in the series at the beginning of each day shall wear on top of their clothing yellow, blue and red bibs respectively while racing that day. The bibs will be provided by the Organizing Authority.
- 2.3 [SP] Boats are required to display national flags on their mainsail as in class rule C.10.4 (a) (4). 470/World Sailing approved national flag manufacturers can be found at: [www.sailing.org/35308.php](http://www.sailing.org/35308.php)

## **3. ELIGIBILITY AND ENTRY**

---

- 3.1 The regatta is open to boats of the 470 Class and to competitors who comply with World Sailing Regulation 19 – Eligibility Code.

Participating crews in the regatta shall be approved by their National 470 Class Association or by their National Authority where there is no National Association. Only crews representing nations in good standing with the International 470 Class Association may participate. Each crew member shall be member of a National 470 Class Association affiliated to the National Authority or of the International 470 Class Association when there is no National Association in the concerned country.

- 3.2 Eligible boats shall fill in the relevant “On-line Entry Form” on the Championship website of the International 470 Class Association at [2019worlds.470.org](http://2019worlds.470.org), and pay the corresponding entry fees. A request for entry becomes a valid pre-entry when the relevant National 470 Class Association, or the National Authority where there is no National Association, has confirmed to the International 470 Class Association that the corresponding crew is approved to take part in the Championship and meets the eligibility criteria, and when the International 470 Class Association has received the payment of the entry fees. The International 470 Class Association will publish the list of pre-entries on its website. Only crews with valid pre-entry in the list may take part in the Championship.

The request for entry shall be filled in and the entry fees shall be paid to the International 470 Class Association and received on or before 2 July 2019 to benefit from the advantage of the reduced entry fees (refer to 5.1).

- 3.3 Entries sent after the deadline indicated above, but on or before 25 July 2019, will be accepted with the required entry fees. Late entries received on 26 July

2019 or later will be accepted only at the discretion of the Management Committee of the International 470 Class Association, whose decision shall be final.

- 3.4 Competitors under 18 years of age shall present a signed and completed parent (or guardian) consent and declaration form at on-site registration. They may choose to download their Entry Form from their Sailor Account once they have completed their entry and entry fee payment to the Championship.
- 3.5 Support Team members (Coaches, team leaders and representatives from participating nations) are requested to fill in the entry form posted at [2019worlds.470.org](http://2019worlds.470.org) on or before 2 July 2019. Entry fees shall be paid direct to the Organizing Authority during on-site registration (refer to 5.1).

## 4. CLASSIFICATION

---

- 4.1 No classification requirements will apply (see RRS 79).

## 5. FEES

---

- 5.1 The entry fee is EUR455 per boat.

The entry fee is reduced to EUR355 per boat for boats that have completed online entry and paid their entry fee on or before 2 July 2019.

Entry fees to be paid by Support Teams are EUR75 per person and **will be paid directly to the Organizing Authority at on-site registration.**

These entry fees include all collective services provided by the Organizing Authority, such as social events, boat park facilities, toilets and showers.

- 5.2 Entry fees shall be paid at the same time the request for entry is sent to:

“470 International”

- 1) By On-Line Secure Credit Card Payments via “PayPal payment” button at [2019worlds.470.org](http://2019worlds.470.org)

or

- 2) By bank transfer to the “470 International” account

Header: 470 International

Bank: 30003 – branch: 02206 – account number: 00050460897 04

IBAN: FR76 3000 3022 0600 0504 6089 704

SWIFT: **SOGEFRPP**

Bank address: SOCIETE GENERALE

3 rue du Pavé de Meudon – 92370 - Chaville - France

Please advise when bank transfer has been made by email to: [payments@470.org](mailto:payments@470.org)

## 6. CHAMPIONSHIP FORMAT

---

- 6.1 Men and Women fleets shall race separately.
- 6.2 Each event shall consist of an opening series and a medal race, provided a minimum of 5 races have been completed in the opening series. The opening series may be divided into a qualifying series and a final series. The top ten finishers in the opening series of each event shall advance to the Medal Race.
- 6.3 Opening series:
- 6.3.1 Qualifying series – 5 races are scheduled for each event. Crews will be divided into fleets. Each fleet will have approximately the same number of crews.
- 6.3.2 The number of fleets will be as defined below:
- one fleet up to 40 boats,
  - two fleets from 41 to 80 boats,
  - three fleets for more than 80 boats.
- The numbers of fleets may be changed by the Organizing Authority when total number of entries is close to the limits stated in this NoR.
- 6.3.3 Final series – 6 races are scheduled for each event. Crews in the qualifying series will be divided into final fleets according to the final scores of the qualifying series. There will be the same number of fleets as in the qualifying series. Each fleet will have approximately the same number of crews. The Gold fleet shall consist of the first part of the final scores of the qualifying series, Silver fleet of the second part, and so on.
- 6.3.4 Single series - If there are fewer than 40 entries at an event, then the Championship will be competed in one separate fleet with 11 races in the opening series and a Medal Race, provided a minimum of 5 races have been completed in the opening series.
- 6.4 Medal Race - will be scheduled for each event as per NoR 6.2.

## 7. SCHEDULE

---

- 7.1 Schedule of races:

Day 1 - Friday 2 August 2019	Registration and measurement	09:00 - 18:00
Day 2 - Saturday 3 August 2019	Registration and measurement	09:00 - 17:00
	Practice Race	12:00
	Opening Ceremony	18:00
Day 3 - Sunday 4 August 2019	Qualifying series	12:00
Day 4 - Monday 5 August 2019	Qualifying series	TBA

Day 5 - Tuesday 6 August 2019	Qualifying series	TBA
Day 6 - Wednesday 7 August 2019	Qualifying/Final series	TBA
Day 7 - Thursday 8 August 2019	Qualifying/Final series	TBA
Day 8 - Friday 9 August 2019	Qualifying/Final series	TBA
	Medal Race	TBA
	Prize Giving Closing Ceremony	TBA

7.2 No warning signal will be given after 16:30 on the last racing day.

7.3 No more than three races shall be sailed each day.

## 8. IDP1 [NP] MEASUREMENT

8.1 A Technical Committee shall be appointed in accordance with RRS 92.

8.2 Each boat shall produce a valid Measurement Certificate, including the completed Measurement Form, at the time of pre-race equipment inspections. If the completed Measurement Form is a photocopy, its authenticity shall be confirmed with an original stamp and signature from the issuing authority. If a boat is to produce a measurement certificate in accordance with RRS 78.2, she shall do so before 18:00 on 3 August 2019.

8.3 Pre-race equipment inspections will consist of, at least:

- full measurement of boats used by crews within the Top 30 of the World Sailing Men's ranking list or within the Top 20 of the World Sailing Women's ranking list,
- full measurement of not less than 10 other boats per event, chosen at random by the Event Chief Measurer,
- for the other boats, measurement shall include at least: the weight of the complete boat (Class Rule C.6.1), conformity of the hull and sails to the measurement certificate and to Class Rules B.3.1, C.10.3, C.10.4, D.1.4, G.2.2 and G.3.1 (identification marks on hull and sails), Class Rules F.3.5(a)(11)&(12) and F.4.3(a)(5)&(6) (stoppers and limit marks on spars), permitted fittings on boats and any specific checks requested by crews for their own boats.

The Event Chief Measurer may request additional inspections checks on a case by case basis.

8.4 Event Measurement Regulations and Policies will be published on the Championship website before the start of the event and posted on the official notice board the day before the first day for event measurement. They will be available to competitors, team leaders and coaches at the Race Office upon request.

8.5 In accordance with RRS78, competitors are responsible for maintaining their boat in accordance with the Class Rules (for the purpose of RRS 78,

competitors are considered to be the owners). Equipment checks will be performed at random during the regatta.

## 9. SAILING INSTRUCTIONS

---

9.1 Sailing Instructions will be available during registration at the Race Office and at the Championship website. Other documents governing the event will be published with the Sailing Instructions.

## 10. VENUE

---

10.1 The regatta site is located at:

**Enoshima Yacht Harbor.**

Enoshima, 1 Chome-9 Enoshima,

Fujisawa-shi,

Kanagawa-ken 251-0036, Japan

Tel.: +81-466-22-2128

Fax: +81-466-25-5413

E-mail: [info@enoshima-yacht-harbor.jp](mailto:info@enoshima-yacht-harbor.jp)

Web: <http://www.s-n-p.jp/english/enoshima-yacht-harbor/>

Contact Person: Ikuko Horikawa, [ikuko.horikawa@gmail.com](mailto:ikuko.horikawa@gmail.com)

10.2 Appendix 1 shows the location of the racing areas.

10.3 Appendix 2 shows the limits of the permitted navigation area.

## 11. COURSES

---

11.1 The courses will be Windward/Leeward or Trapezoid.

## 12. PENALTY SYSTEM & INTERNATIONAL JURY

---

12.1 RRS Appendix P, *Special Procedures for RRS 42*, will apply.

12.2. RRS P2.3 will not apply and RRS P2.2 is changed so that it will apply to any penalty after the first one.

12.3 An International Jury shall be appointed in accordance with RRS 91(b).

12.4 Decisions of the International Jury shall be final as provided in RRS 70.5.

## 13. SCORING

---

13.1 RRS Appendix A will apply.

13.2 Qualifying series:

- There will be a minimum of 4 and a maximum of 5 races in the qualifying series.
- When there are 4 completed qualifying races at the end of a racing day, then the event will proceed on the next racing day with the Final series.



- All race scores from the qualifying series will be carried forward to the final series.

### 13.3 Final series:

- There will be 6 races in the final series.
- At least 1 final race for the Gold fleet is required to be completed to constitute the Championship for all fleets and/or to enter the Medal Race.

### 13.4 Single series

- There will be 11 final races in the single series.
- At least 5 final races are required to be completed to constitute the Championship or to enter the Medal Race.

### 13.5 Discards

- When fewer than 3 races have been completed, a boat's series score is the total of her race scores from all races,
- When 3 or more races have been completed, a boat's series score is the total of her race scores excluding her worst score.

### 13.6 Medal Race

- The boats assigned to compete in the Medal Race will be ranked highest in the Championship except for a boat disqualified from the Medal Race under RRS 5, 6 or 69.
- A boat's score shall be double the number of points specified in RRS Appendix A4.1, and the score of that race shall not be excluded from the series score.
- Ties in the series score between boats with different Medal Race point scores shall be broken in favour of the boat that scored better in the Medal Race. This changes RRS Appendix A8.

## 14. **[DP] [NP] SUPPORT TEAMS**

---

14.1 All Support Team members shall be registered (see 3.5) with the Organizing Authority and will be required to comply with local legislation and event Support Team Regulations. The Organizing Authority may refuse registrations and accept later registrations at their sole discretion.

14.2 Registered Support Team boats shall:

- a) fly a flag with their three letter national code (see RRS G1.1) clearly displayed, or shall carry a sticker of their three letter national code on each side of the boat or engine. The minimum height for the letters shall be 200 mm. The flag or stickers will not be provided by the Organizing Authority.
- b) fly a numbered identifier flag which will be provided by the Organizing Authority during registration.

- 14.3 Registered support boats shall act as assistance / rescue boats in case of need and shall comply with any instructions given by the Race Committee or the Organizing Authority.
- 14.4 All support boats shall have third party liability insurance with a minimum cover of EUR 1,500,000 or equivalent per incident.
- 14.5 All drivers of support boats must carry a license. Please refer to General Information at the end of the NoR for information on limited license for non-residents (“Operator Card”).

## 15. [DP] [NP] BERTHING

---

When berthed, boats shall be kept in their assigned place at the boat park.

## 16. PRIZES AND TITLES

---

- 16.1 The first crew of the final official ranking list of the World Championship will be declared:

**“470 Class Men’s World Champion”**

and

**“470 Class Women's World Champion”**

- 16.2 Medals will be awarded to the first, second and third place crews of the World Championship by the International 470 Class Association.
- 16.3 Prizes will be awarded to the top-ten placed crews of the World Championship by the Organizing Authority.

## 17. RISK STATEMENT

---

- 17.1 Competitors and support team members participate in the Championship entirely at their own risk and they are reminded of the provisions of RRS 4, Decision to Race. Sailing is by its nature an unpredictable sport and therefore involves an element of risk. By taking part in the event, each competitor agrees and acknowledges that:
- 17.1.1 They are aware of the inherent element of risk involved in the sport and accept responsibility for the exposure of themselves, their crew and their boat to such inherent risk whilst taking part in the event;
- 17.1.2 They are responsible for the safety of themselves, their crew, their boat and their other property whether afloat or ashore;
- 17.1.3 They accept responsibility for any injury, damage or loss to the extent caused by their own actions or omissions;
- 17.1.4 By participating in any race, they are satisfied that their boat is in good order, equipped to sail in the event and they are fit to participate;



- 17.1.5 The provision of a race management team, safety boats, judges and other officials and volunteers by the organizer does not relieve them of their own responsibilities;
- 17.1.6 The provision of safety boat cover is limited to such assistance, particularly in extreme weather conditions, as can be practically provided in the circumstances.
- 17.1.7 They will familiarize themselves with any venue/event specific risks, adhere to rules and information produced for the venue/event and they will attend any venue/event safety briefings.
- 17.2 The Organising Authority and all parties involved in the regatta organisation will not accept any liability for material damage or personal injury or death sustained in conjunction with or prior to, during, or after the regatta.

## **18. [DP] [NP] MEDIA RIGHTS, CAMERAS AND ELECTRONIC EQUIPMENT**

---

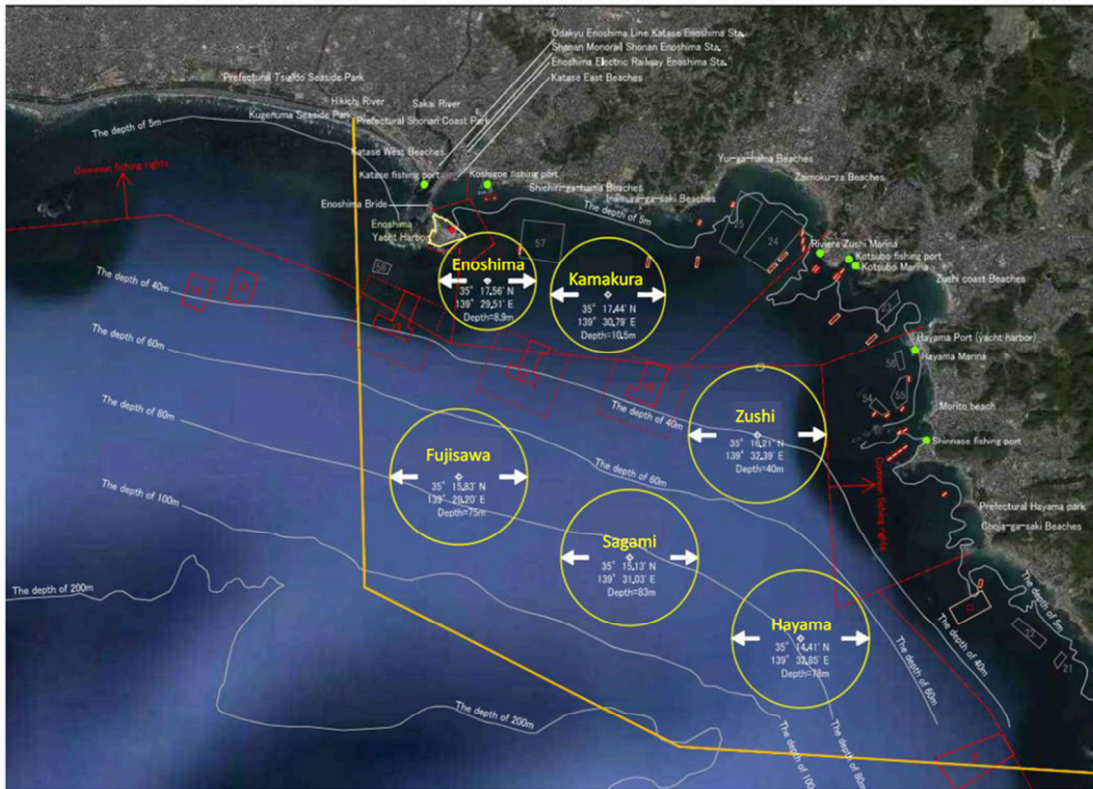
- 18.1 By participating in the Championship, competitors automatically grant to the International 470 Class Association and to the Organizing Authority and their sponsors, the right in perpetuity to make, use and show, from time to time at their discretion, any motion pictures and live, taped or filmed television and other reproductions of the athlete during the period of the competition without compensation.
- 18.2 Boats may be required to carry cameras, sound equipment or positioning equipment as specified by the organizing authority and in accordance with Class Rule C.5.1 (a) (3).

## **19. INSURANCE**

---

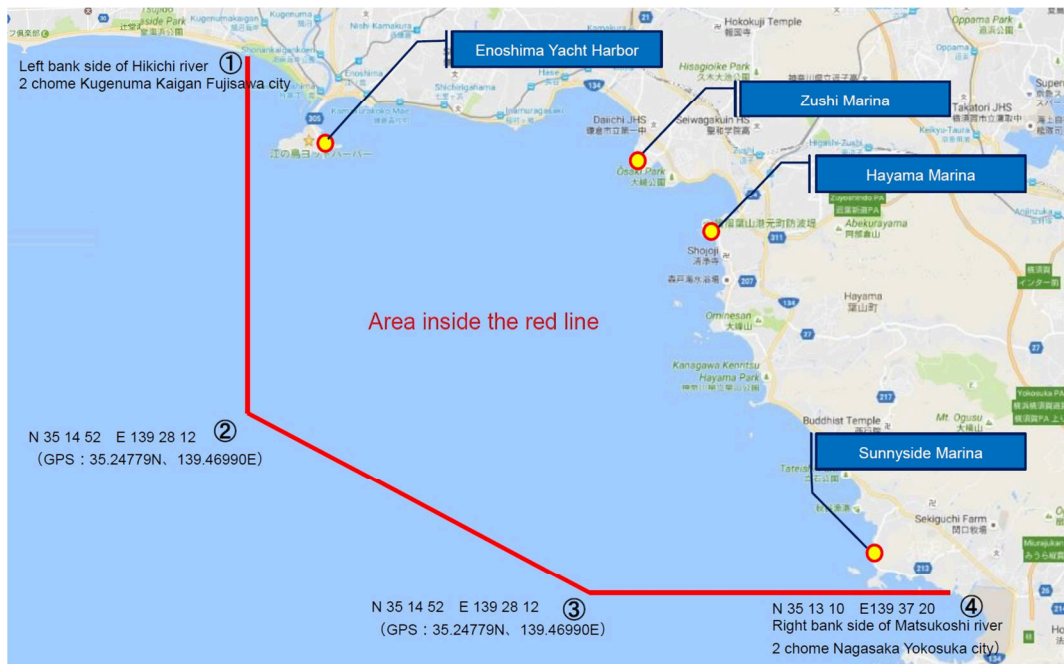
- 19.1 Each participating boat shall be insured with valid third party liability insurance with a minimum cover of EUR 1,500,000 per event or equivalent. The Organizing Authority will not be responsible for verifying the status or validity of such certificates.

## APPENDIX 1 – RACING AREAS



The exact racing areas for each day will be indicated in the SIs. Racing area “Enoshima” will be the Medal Races area, and racing areas “Fujisawa”, “Sagami” and “Hayama” will be the preferred ones for the Championship, depending on weather conditions and the number of fleets racing.

## APPENDIX 2 – NAVIGATION AREA LIMITS



## General Information (Not part of the Notice of Race)

- **The sailing conditions**

During the time of year for which the 2019 470 World Championship is scheduled, the average wind speed is 6.8 m/s. The sea breeze blows south-west and is stable.

Weather report

[http://www.windguru.cz/int/index.php?sc=208567&sty=m\\_menu](http://www.windguru.cz/int/index.php?sc=208567&sty=m_menu)

Weather map <http://www.jma.go.jp/en/g3/>

Tide table <http://wisuki.com/tide/383/enoshima>

- **Charter boats**

Organizing Authority will provide charter boats to help non-Japanese competitors on a first come first served basis for JPY 250,000

Please visit the event website for details.

- **Boat Park Storage**

Enoshima Yacht Harbor

Contact the Maintenance Dept. of the Shonan Nagisa Park, Ltd.

Phone: +81-466-25-2211

Email Address: [info@enoshima-yacht-harbor.jp](mailto:info@enoshima-yacht-harbor.jp)

<http://www.s-n-p.jp/english/enoshima-yacht-harbor/>

- **Enoshima Yacht Harbor User Guide.**

[Harbor Rules and Regulations \(PDF\)](#)

- **Accommodation & Travel**

JTB Travel <http://www.jtbcorp.jp/en/index.asp>

HIS Travel <http://www.no1-travel.com/>

Rakuten Travel <http://travel.rakuten.com/>

Kanagawa Pre-Games Training Camps Invitation Committee

<http://www.kanagawa2020.jp/accommodation/>

Airbnb

<https://www.airbnb.com/?locale=en>

- **Guide for Operator Card and Boat Inspection**

License, inspection and registration are required for the support boats/drivers in Japan. However, overseas teams may be exempted from such requirements during the limited period (Oct 2016 – Aug 2020) for driving in the [Navigation area](#) by obtaining “Operator Card” (for exemption of driver license) and “Certificate Sticker” (for exemption of boat registration)

### Operator Card

The operator card will be issued by the Japanese Government (MLIT), through JSAF. Applicants should prepare below documents. (It will take 30 days to issue the card.)

- Application form (with signature)
- Photo (No cap / sunglasses)
- Country with driving license system: Copy of the license
- Country without driving license system: Endorsement from MNA and a copy of passport
- Endorsement for Operator Card [PDF](#) [WORD](#)

The cards will be given at Enoshima directly to the driver.

### **Boat Inspection – Non Japanese Registration**

The Boat Inspection will be issued by the Japanese Government (MLIT), through JSAF.

Applicants should apply at least 30 days before estimated arrival date of the coach boats.

Please prepare the copy of boat inspection if you have.

JSAF will issue a “Certificate Sticker” after checking the boat in Japan.

Please read [JSAF SUPPORT BOAT REGULATIONS](#).

↓ More details can be found here ↓

